



# COVERLAB Analytics

Greg Ferrara  
Program Manager  
COVERLAB

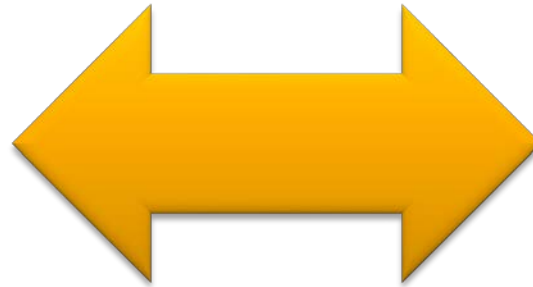
Commercial Vehicle Enforcement Resource Lab  
Institute for Transportation Research and Education (ITRE)  
North Carolina State University, Raleigh, NC

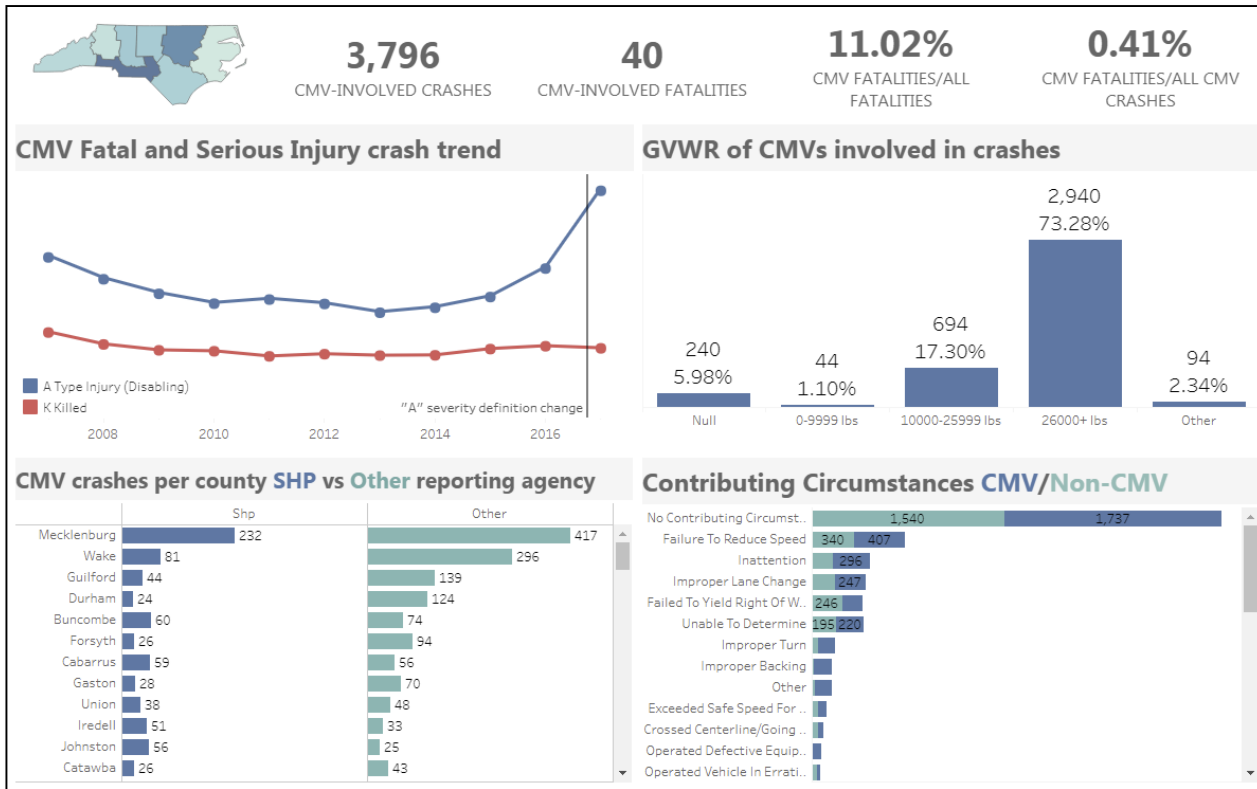
**COVERLAB**

Commercial Vehicle Enforcement Resource Lab

<https://coverlab.org>

# University Partnership





# Target Audiences

TROOP  
First Sergeants



STATE  
Command Staff



# Troop Level



# Develop Smart Strategies

- **Track Performance**
  - Troop and trooper level metrics
- **Identify Troop-Specific Problem Areas**
  - Who, What, Where, Why How
- **Select Enforcement Strategies**
  - Optimize locations, times, and types of enforcement
  - Passenger vehicle enforcement?
  - When and where are NCDOT treatments needed?
  - Where and when is teaming effective? Local/Traditional
  - Identifying and engaging high risk carriers

---

DEMO



# www.coverlab.org



**Greg Ferrara** - Program Manager  
919.515.8656 | [gpferrar@ncsu.edu](mailto:gpferrar@ncsu.edu)

**Sharath Bhat** - Data Analytics Technologist  
919.515.7923 | [pbfoley@ncsu.edu](mailto:pbfoley@ncsu.edu)

**Elizabeth Daniel** - GIS Analyst  
919.515.8651 | [cabelch2@ncsu.edu](mailto:cabelch2@ncsu.edu)

**Matt Kuliani** - Content Delivery Specialist  
919.515.8587 | [mlkull@ncsu.edu](mailto:mlkull@ncsu.edu)

