



Route 9 & Speen Street Bicycle & Pedestrian Access Study

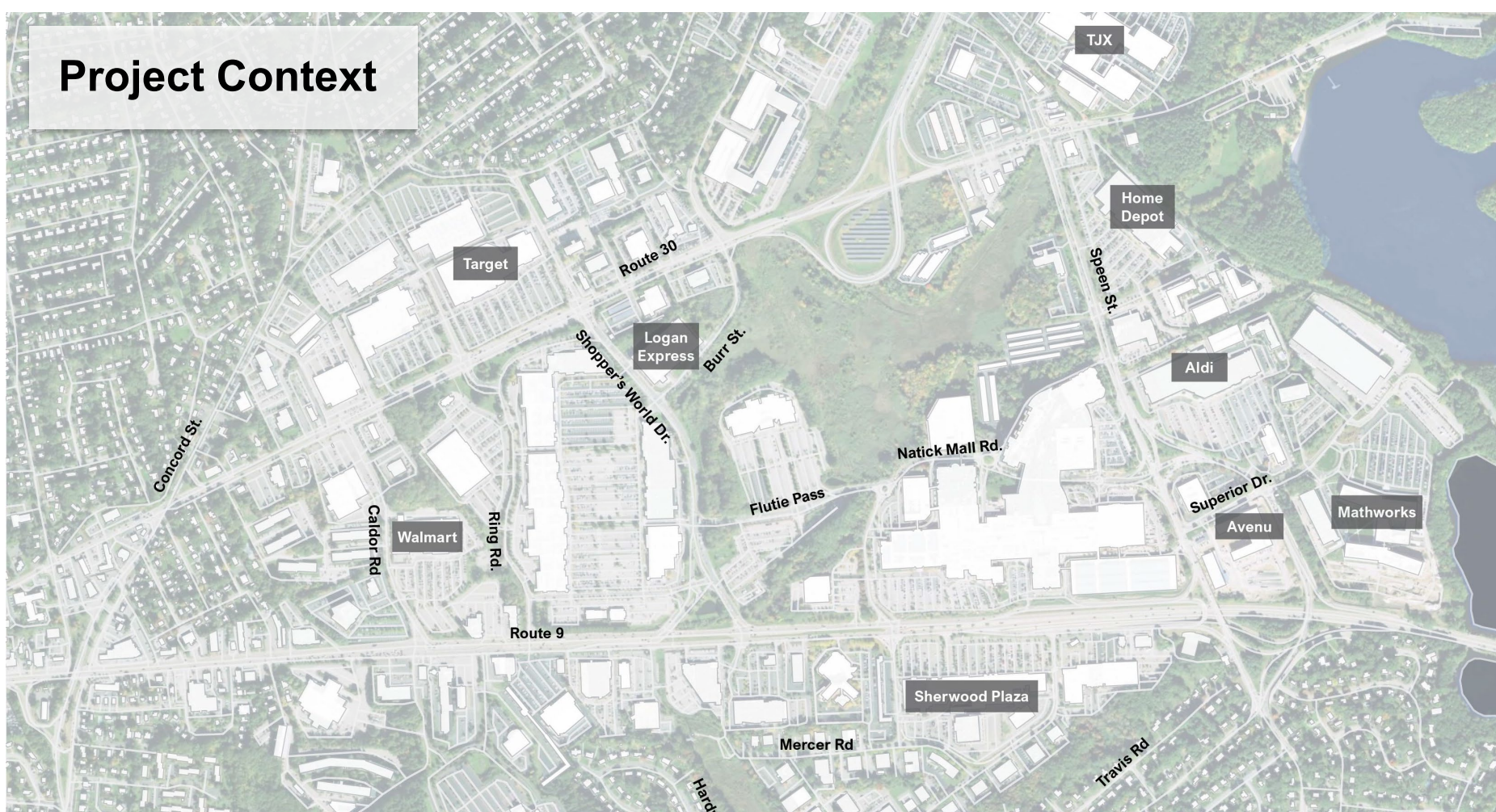
Ann Sullivan
MassDOT District 3

Amelia Casey
Arup

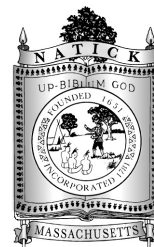
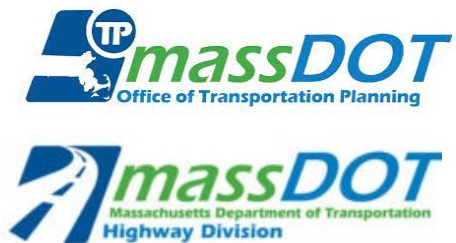
Agenda

- Project Context & Goals
- Project Process
- Key Findings & Outcomes

Project Context



Key Players



ARUP

Project Goals

- Create a vision for a **welcoming** and **inclusive environment** for those who **walk, bike, and take transit** within and around the Golden Triangle
- Understand **existing gaps and challenges** in the bicycle, walking, and transit networks, particularly between existing and future development
- Identify **opportunities** and **leverage existing trail networks, projects, and multimodal infrastructure**
- Develop solutions that are **high impact, low cost, and actionable**, while keeping in mind **potential long-term improvements**
- **Collect & present** information in **useful and helpful format** that makes the case for **safe and comfortable places to bike and walk**



Project Process



DATA COLLECTION & EXISTING CONDITIONS



DESIRE LINE ANALYSIS & OPPORTUNITY IDENTIFICATION



MULTIMODAL ACCESS RECOMMENDATIONS & REPORT

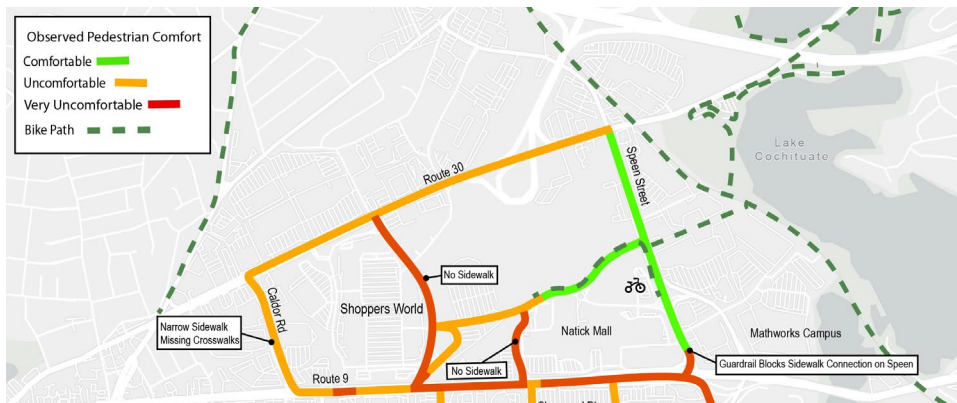


DESIGN VISUALIZATION

Existing Multimodal Assets Need to be Upgraded to Connect the Gaps



Walking, Biking, or Taking Transit in the Golden Triangle is Uncomfortable



Project Process



DATA COLLECTION &
EXISTING CONDITIONS



DESIRE LINE ANALYSIS &
OPPORTUNITY IDENTIFICATION

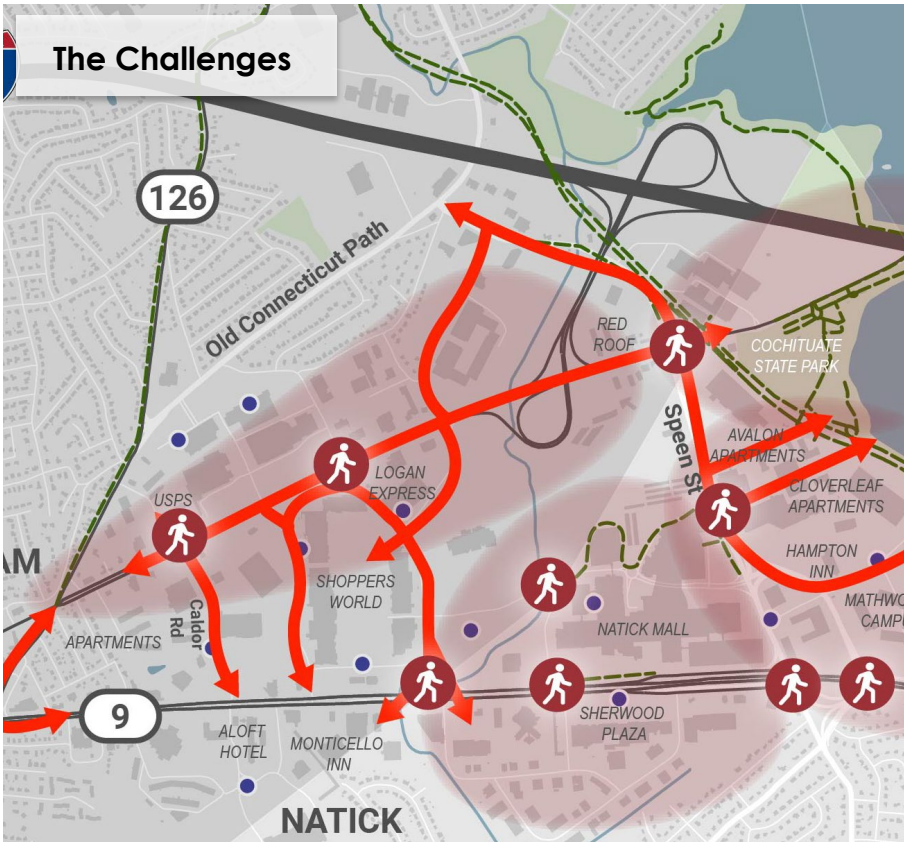


MULTIMODAL ACCESS
RECOMMENDATIONS & REPORT

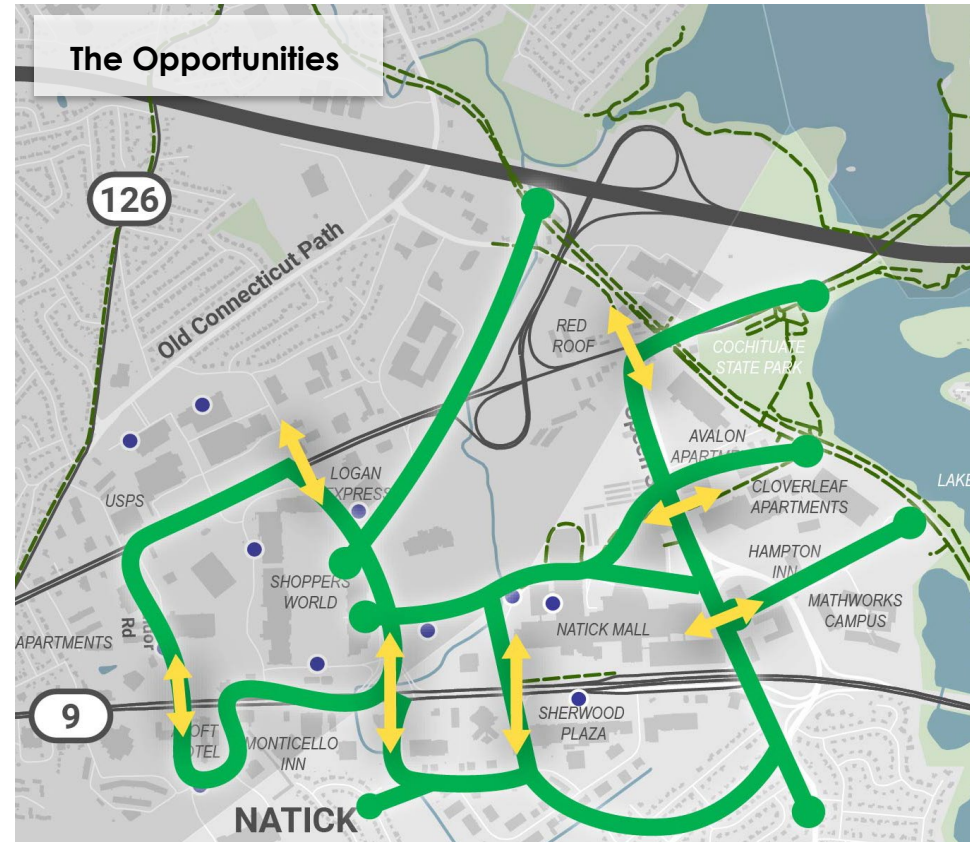


DESIGN
VISUALIZATION

The Challenges



The Opportunities



Project Process



DATA COLLECTION & EXISTING CONDITIONS



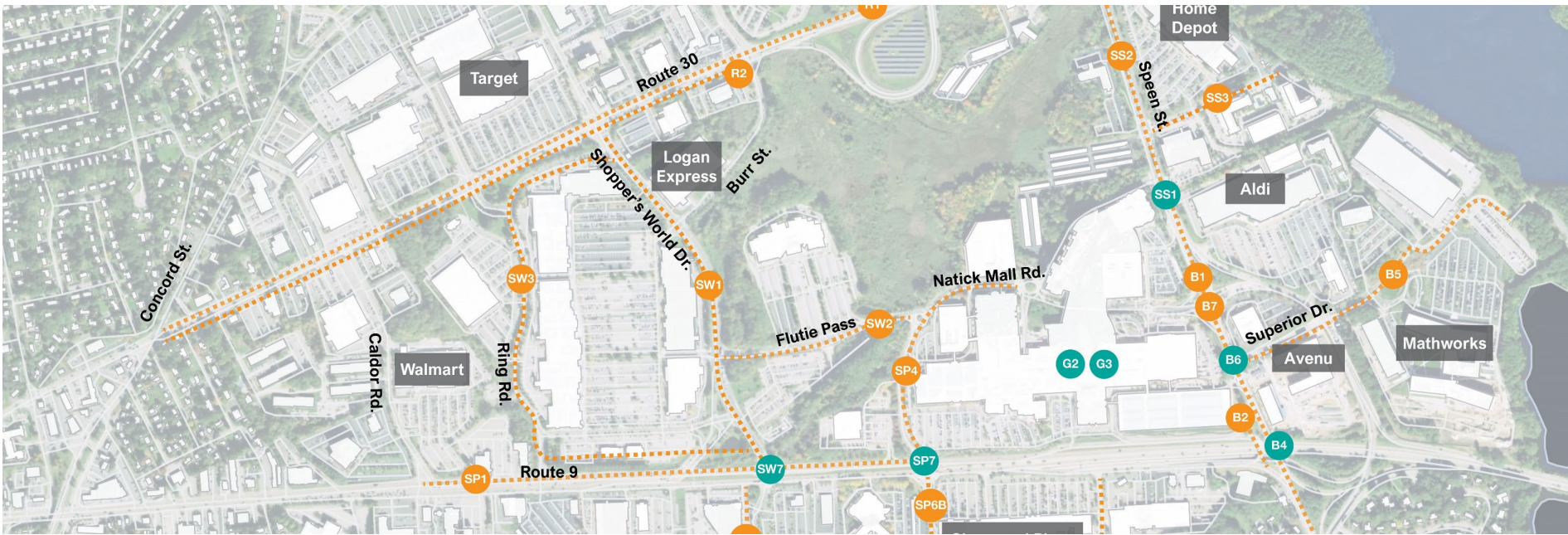
DESIRE LINE ANALYSIS & OPPORTUNITY IDENTIFICATION



MULTIMODAL ACCESS RECOMMENDATIONS & REPORT



DESIGN VISUALIZATION



Intersection
Accessibility &
Safety



Multimodal
Roadway
Safety



ROW
Transformation



User
Experience

Project Process



DATA COLLECTION & EXISTING CONDITIONS



DESIRE LINE ANALYSIS & OPPORTUNITY IDENTIFICATION

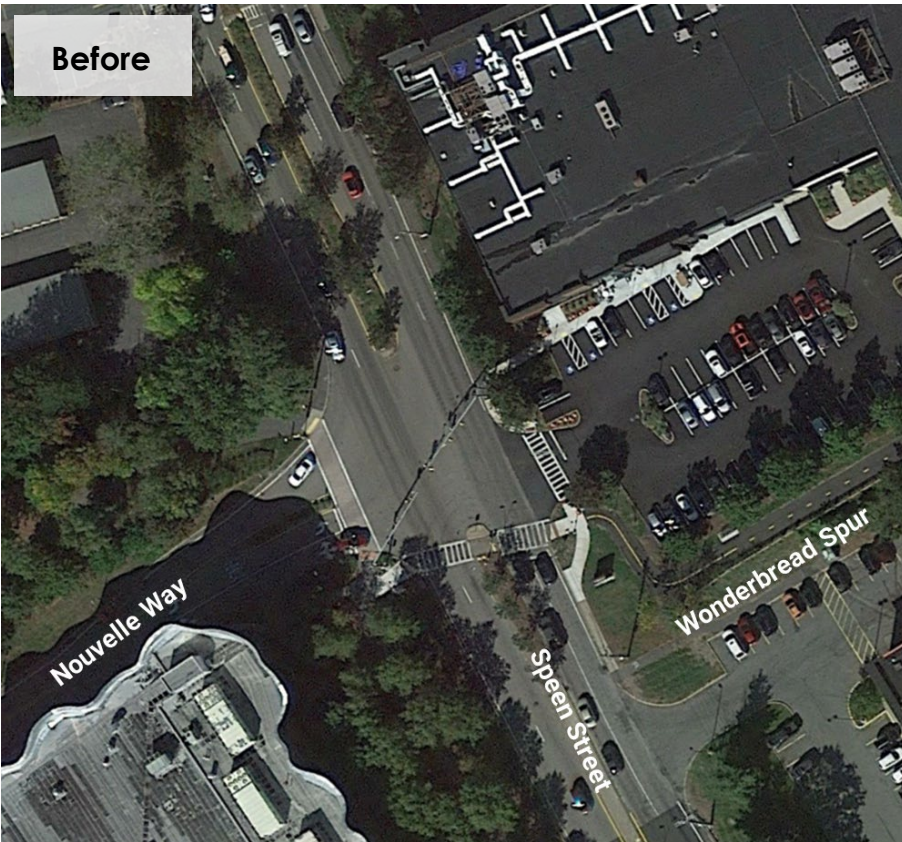


MULTIMODAL ACCESS RECOMMENDATIONS & REPORT

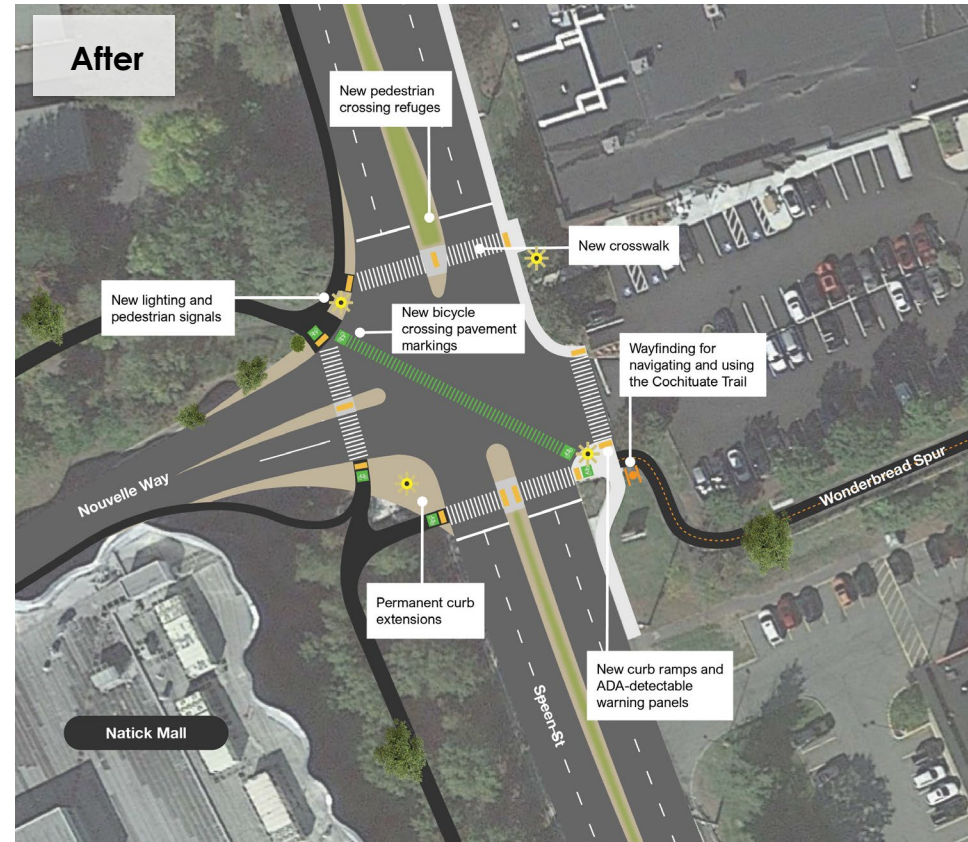


DESIGN VISUALIZATION

Before



After



Key Findings & Outcomes

- Stakeholder coordination from inception to close out is critical to ensure the solutions address community needs
- Implementation coordination is crucial to realize projects in such a dense, multi-use environment
- Development of a blueprint for improvements moving forward
- Identification of opportunities for short-term improvements to provide immediate enhancements for pedestrians and bicyclists
- Ability to prioritize recommendations to focus on those improvements that can be the most impactful to vulnerable users
- Clear delineation of ownership to facilitate conversations with private owners as development and redevelopment continues

