

# A Medical Student's Perspective on Transportation Inequity

---

Nathan Taber

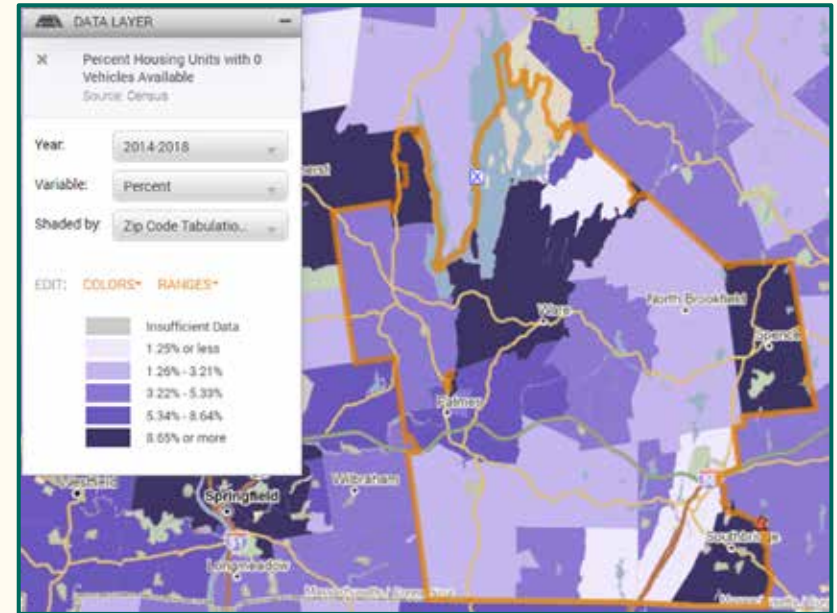
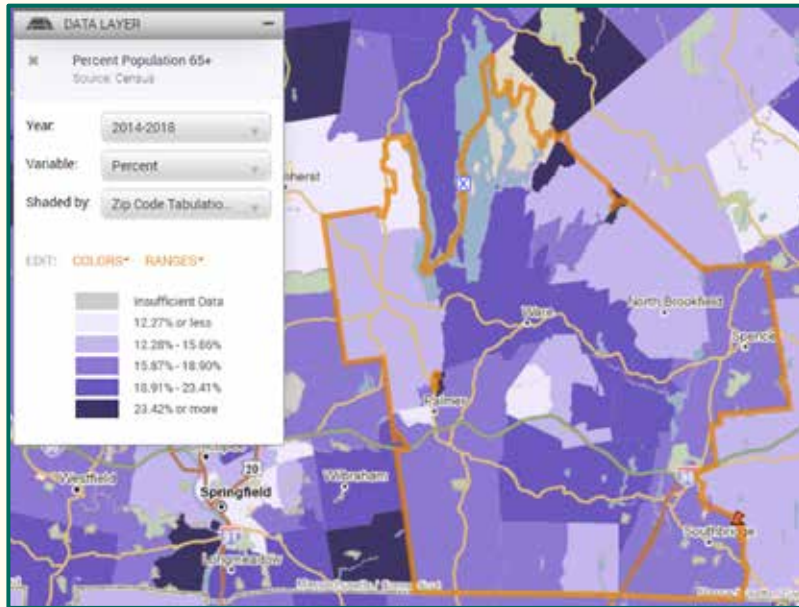
MD Candidate, UMASS Med Class of 2023

# A little about me!

- Second year Medical Student at UMass Med, Class of 2023
  - Population-Based Urban and Rural Community Health Track (PURCH)
- Completed my undergraduate studies at Brandeis in 2017 in biology and public health/health policy
- Clinically, interested in family medicine, preventative medicine and emergency medicine with a significant focus on SDOH
- Particularly interested in the intersection of health and urban planning



# Features of the Quaboag Region



- Between Worcester and Springfield
- 15 Towns across 3 counties (Hampden, Hampshire and Worcester)
- Rural region with little access to public transportation

# Quaboag Valley Community Development Corporation (QV CDC)

- Run the Quaboag Connector
- Synergy Grant from the Health Foundation of Central Massachusetts - 2019
- I joined the team in May of this year through the UMass Med SSLA

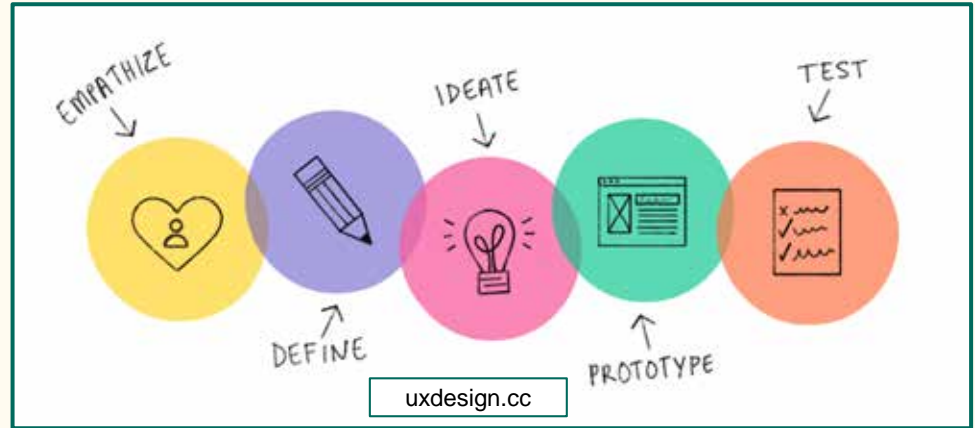


# Scope of Work

- Research on Transportation Technologies
- Learning from other rural transportation providers
- Assumption Testing
  - Fixed-route shuttles, call-center, mobile app-based bookings, timebank, healthcare scheduled rides
- Non-Emergency Medical Transportation Presentation
  - Topic of future work for PURCH Students in the Population Health Clerkship

# Design Thinking

- Five Stages
  - **Empathize**
  - Define
  - Ideate
  - **Prototype**
  - Test
- Assumption testing interviews
- “Person-centered”



# Takeaways

- Transportation is a hugely important social determinant of health
- Think more critically about the unique situations of each
- Appreciation of the amount of care and work that goes into community development projects
- Teamwork and trust (especially community trust) is vital
- Increase awareness of these issues in medical education

Thank you!